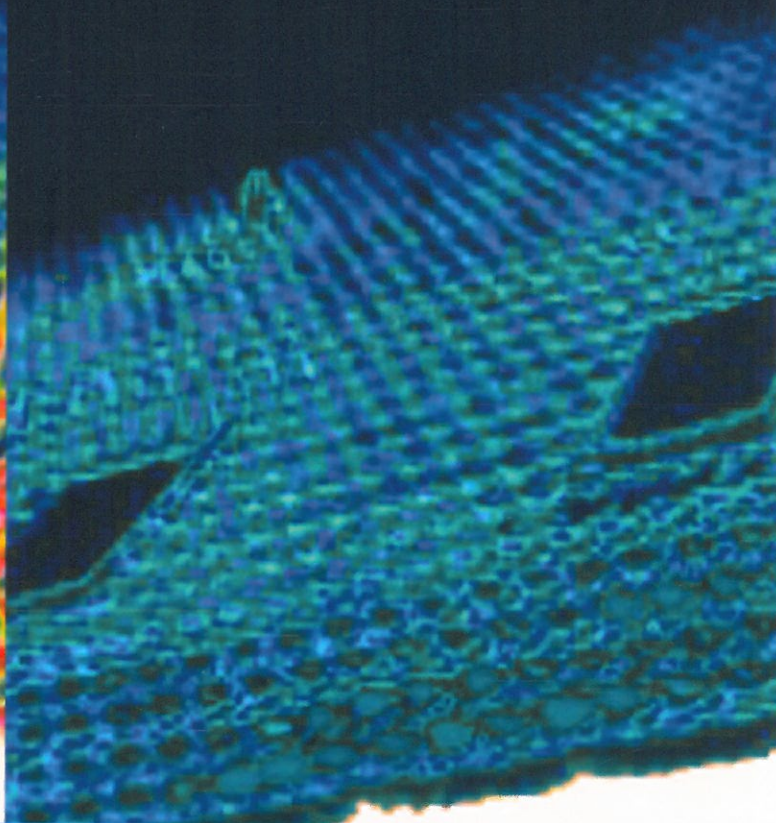
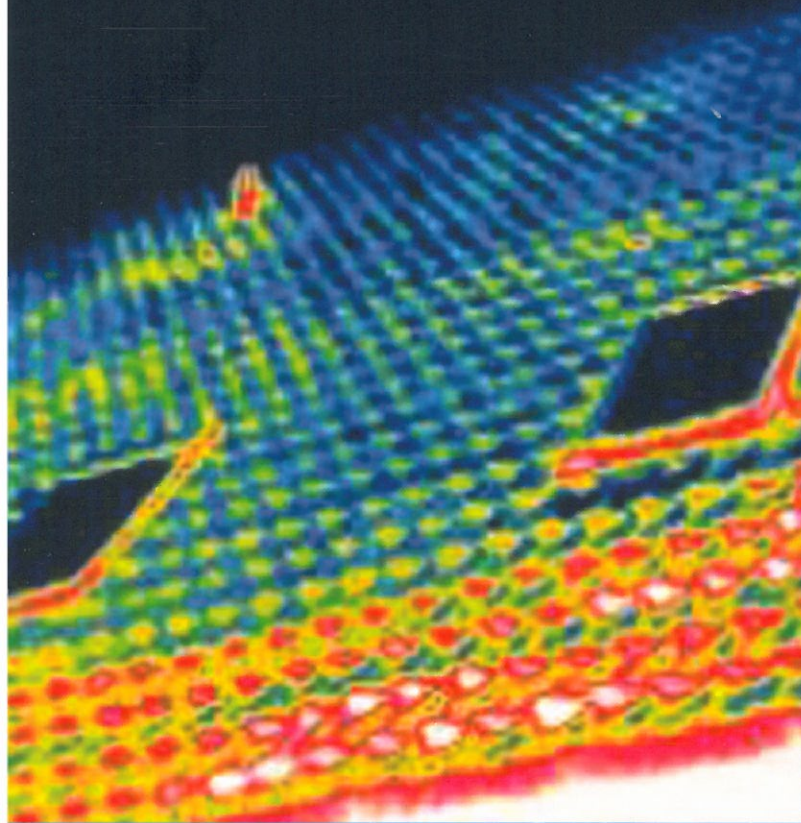


Zip It Up - tight!



Before air sealing

After air sealing



Create airtight roofs & save energy!

In 2008 the Government introduced 'The Code for Sustainable Homes'. This Code obliges housebuilders to make new houses more energy-efficient in order to reduce carbon emissions. Over the coming years these requirements will increase, so that in 2016 all new houses must be carbon zero. This is a tough challenge. Housebuilders are now having to specify products which help them meet these requirements. In turn contractors need to be able to source these new products.

For **housing renovations** - under building regulations - any newly constructed 'thermal element', ie. insulated wall, floor or roof, eg. which forms part of an extension, needs to include reasonable provision to reduce unwanted air leakage.



Skyline Roofing Centres

Hanwell: 0208 571 1666
Leighton Buzzard: 01525 374 723
Kings Langley: 01923 262 620
Uxbridge: 01895 233 524

www.skylineroofing.co.uk

Watford: 01923 226 726
Edgeware: 0208 951 5677
Feltham: 0208 893 8812
Brockley: 0207 358 1000
Bedford: 01234 271 367

KLOBER
Professional roofing accessories

Zip It Up - tight



CREATE AIRTIGHT ROOFS & SAVE ENERGY!

Klober has developed a range of 'Airtightness' products, giving specifiers and contractors options of how to make roofs as airtight as possible. They will be introduced over the next few months.

TAPES

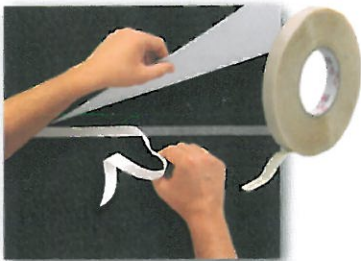
Klober has simplified its tape range so that 3 tapes will cover all your needs.



Permo TR®

This universal, multi-functional tape is suitable, for example for:

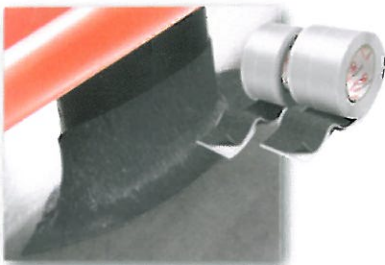
- Taping laps in underlays/vcl's to create an airtight seal
- Repairing tears in underlays
- Sealing around Pipe Sealing Collars and penetrations



Tacto®

Double-sided, Tacto can be used:

- To adhere underlays & AVCL's (air barriers and vapour control layers) to both smooth and irregular surfaces eg plasterboard, roof lights & roof vents
- To seal laps in the underlay/AVCLs
- To create an airtight seal, reducing energy loss through the roof
- Many other applications



Easy-form® tape

Stretchable by up to 70%, this highly flexible tape is ideal for:

- Use around roof/service penetrations eg TV/satellite antennas, cables, pipes
- Repairing roofing underlays
- Around corners of skylights
- Many other applications

Coming up

- Vapour control layers/air barriers
- Sealants
- Pipe Sealing Collars
- Pre-taped Permo® underlays

If you would like to see samples of any of the above products please contact your local Skyline branch or call Klober on 0800 783 3216



Ask for our new Contractor's Guide to Airtightness



Skyline Roofing Centres

Hanwell: 0208 571 1666
Leighton Buzzard: 01525 374 723
Kings Langley: 01923 262 620
Uxbridge: 01895 233 524

www.skylineroofing.co.uk

Watford: 01923 226 726
Edgware: 0208 951 5677
Feltham: 0208 893 8812
Brockley: 0207 358 1000
Bedford: 01234 271 367

KLOBER
Professional roofing accessories